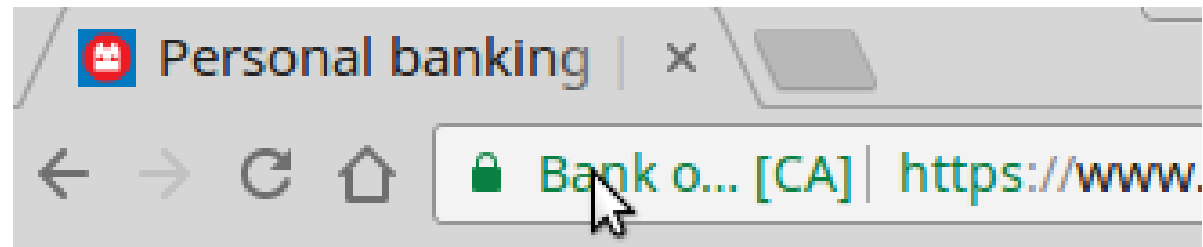


HTTP vs HTTPS



Bonsor 55+ Computer Group

Uniform Resource Locator

Uniform Resource Locator (URL) Scheme
for web address - HTTP or HTTPS

http - connect to website using Hypertext
Transfer Protocol (http) protocol

<http://www.cbc.ca>

<http://www.accuweather.com>

<http://www.ckua.com/>

Uniform Resource Locator

https - connect to website using Hypertext Transfer Protocol Secure (https) protocol

<https://www.bmo.com>

<https://www.yahoo.com>

<https://bonsor55.plussociety.org>

Difference between HTTP and HTTPS

Main difference is all about keeping you
save and secure!!!

With HTTPS, communication between
browser and website is **secure** and **trusted**

HTTPS - Secure Communications

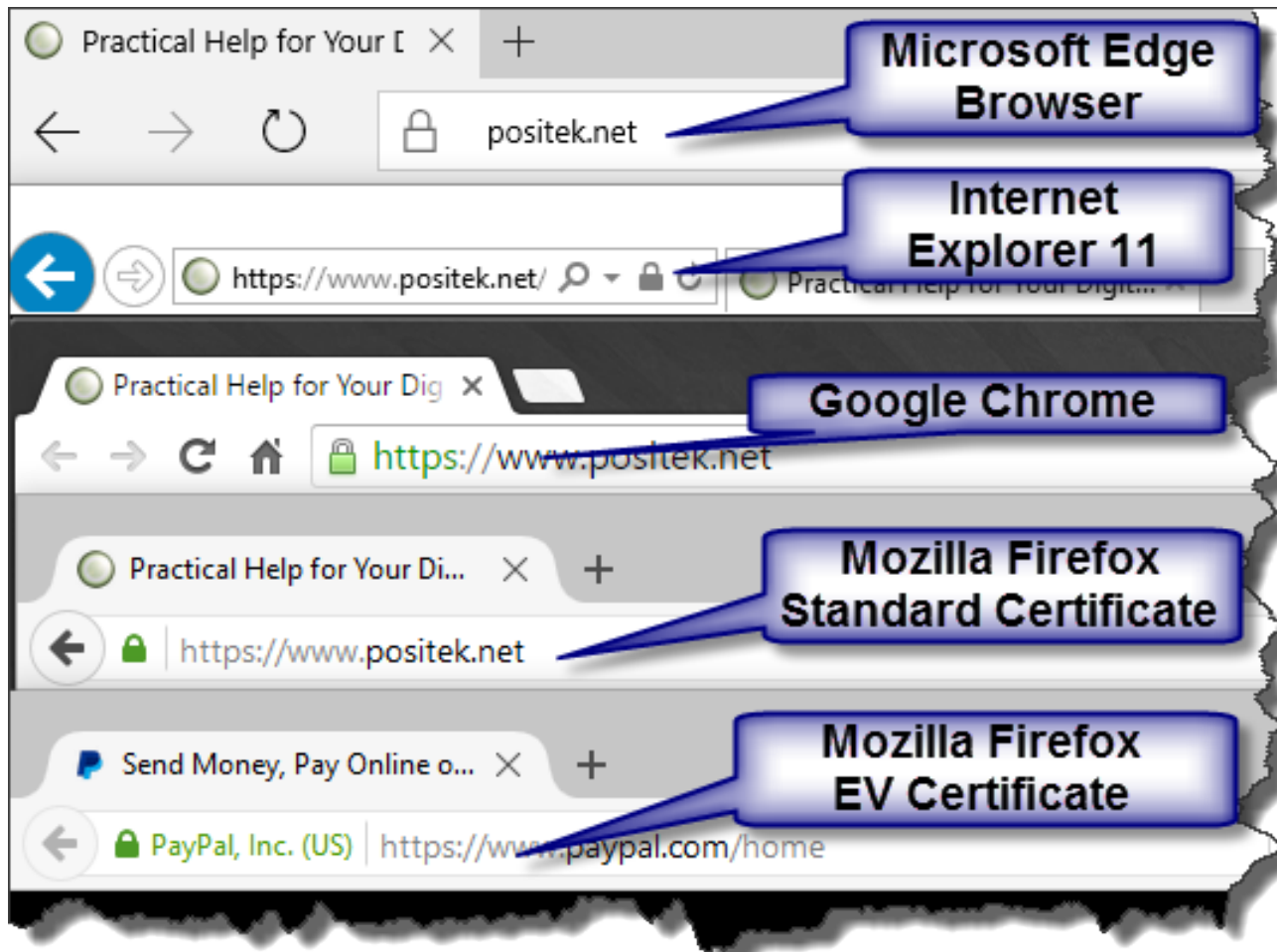
- Data traffic between browser and website is encrypted
- If someone intercepts the communication it cannot be easily understood
- Keeping your important information, e.g. passwords and PINs, safe!

HTTPS - Trusted Communications

- Before actual data is transmitted, website presents its credentials (security certificate) to browser
- This enables the browser to determine if website is the actual website that you are trying to access
- If for any reason the browser determines that the certificate is not valid (e.g. expired, incorrect name), a warning will be shown and it will not proceed further
- Can manually override this if you want and if you *know what you are doing!*

HTTPS – Padlock Icon

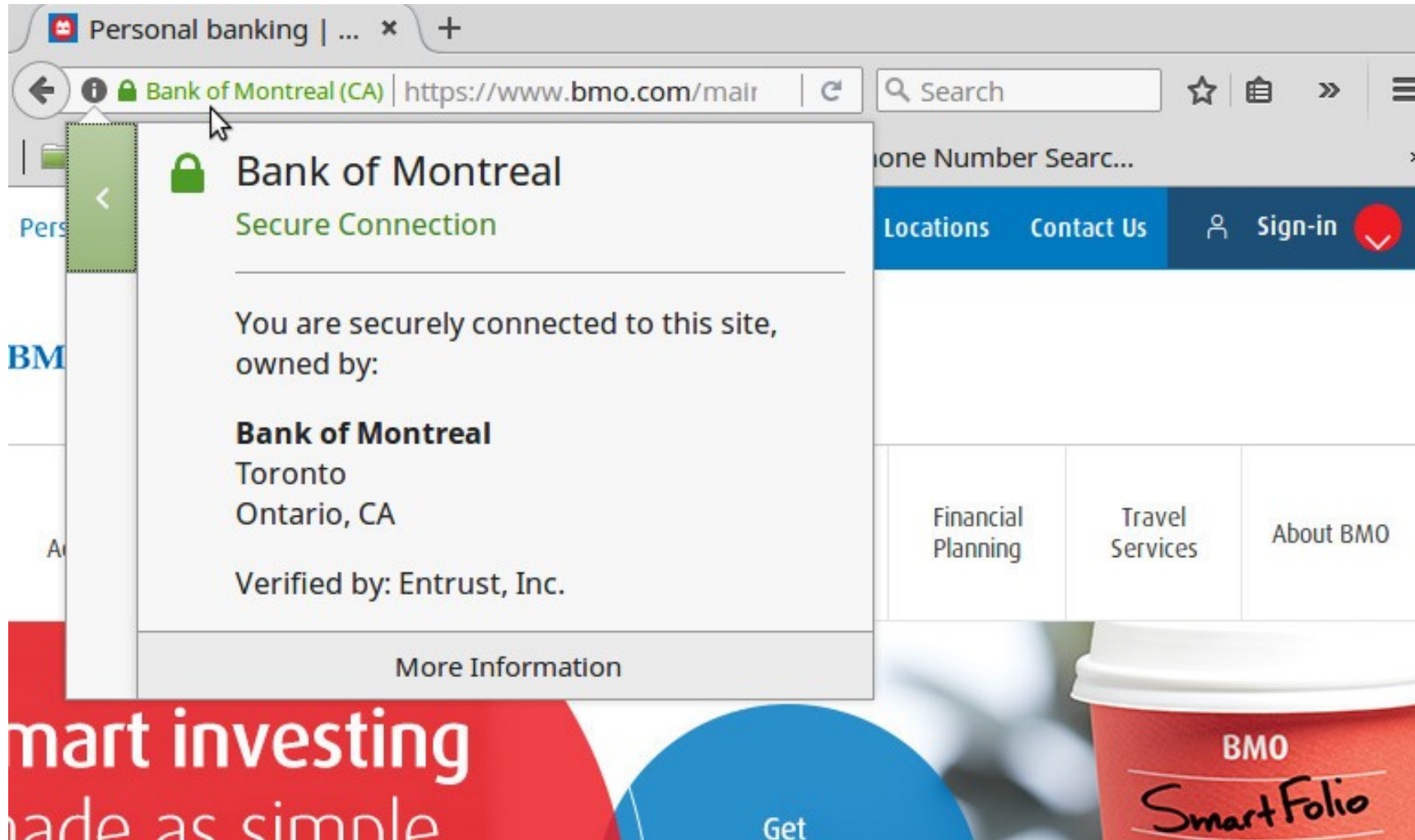
Look for the Padlock!



Source: <https://positek.net/browser-padlock/>

Secure Connection Info

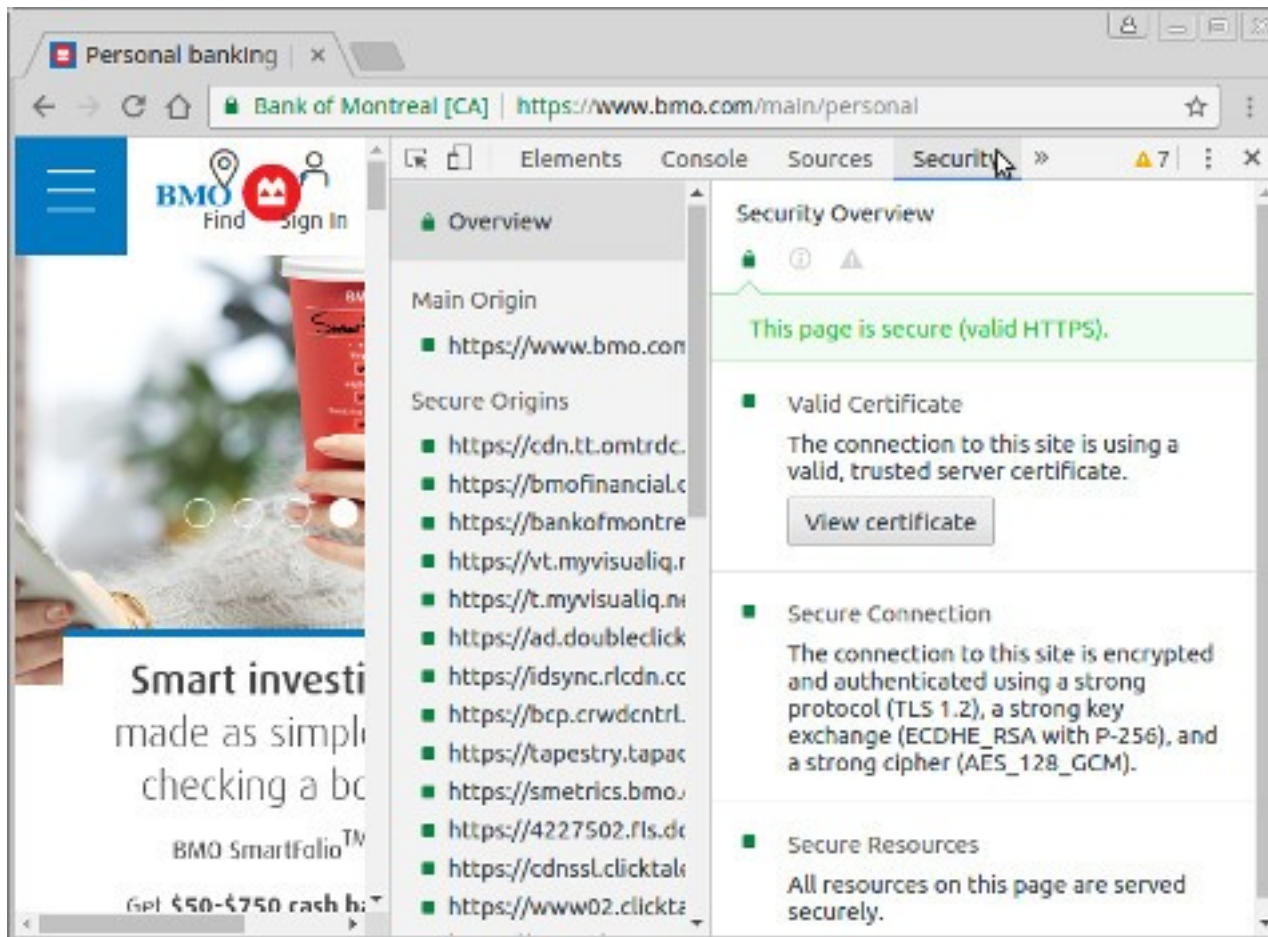
Firefox Browser – click on “padlock” icon



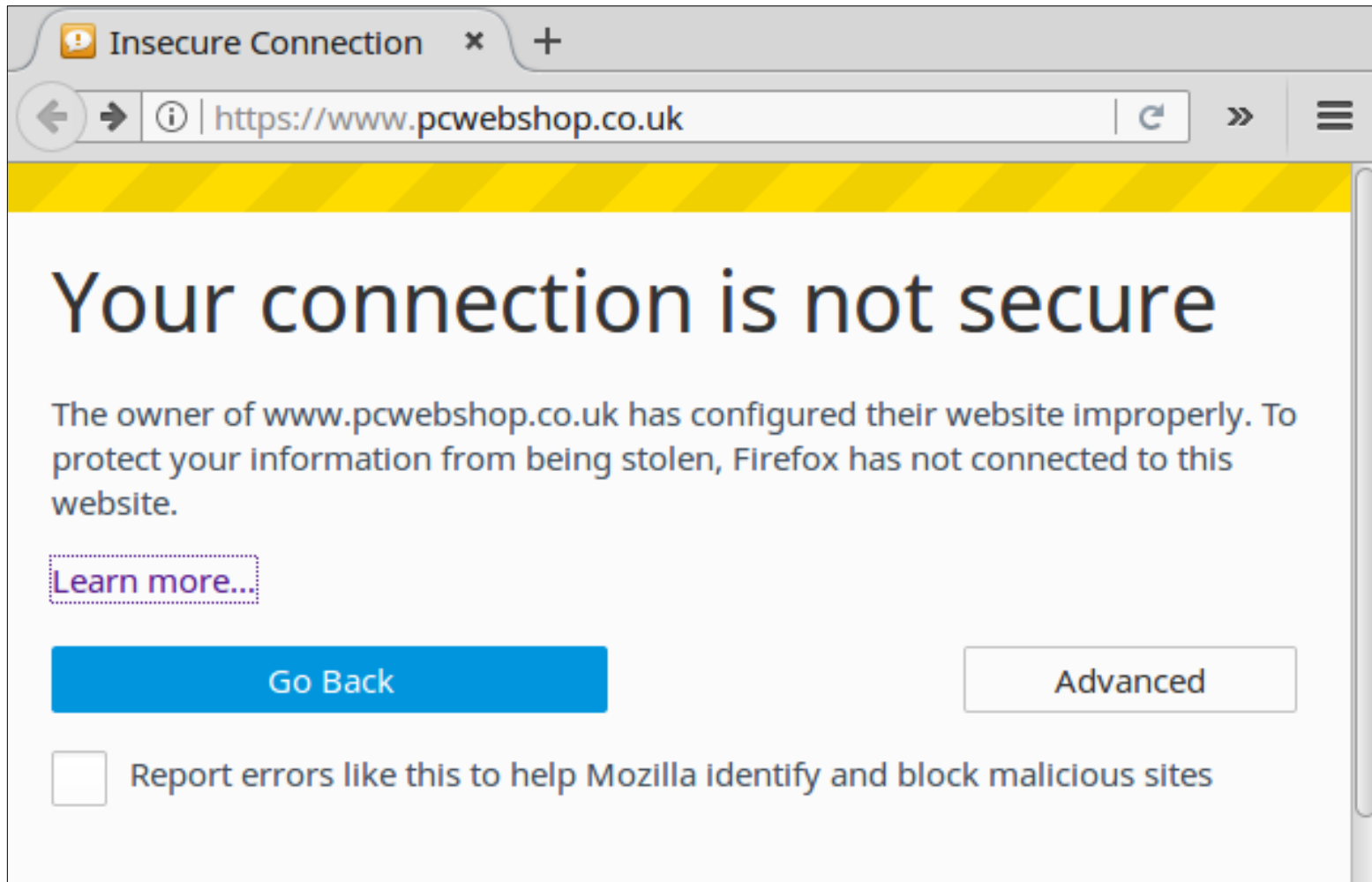
Secure Connection Info

Chrome Browser a little more complicated!

Menu -> More tools -> Developer tools -> Security

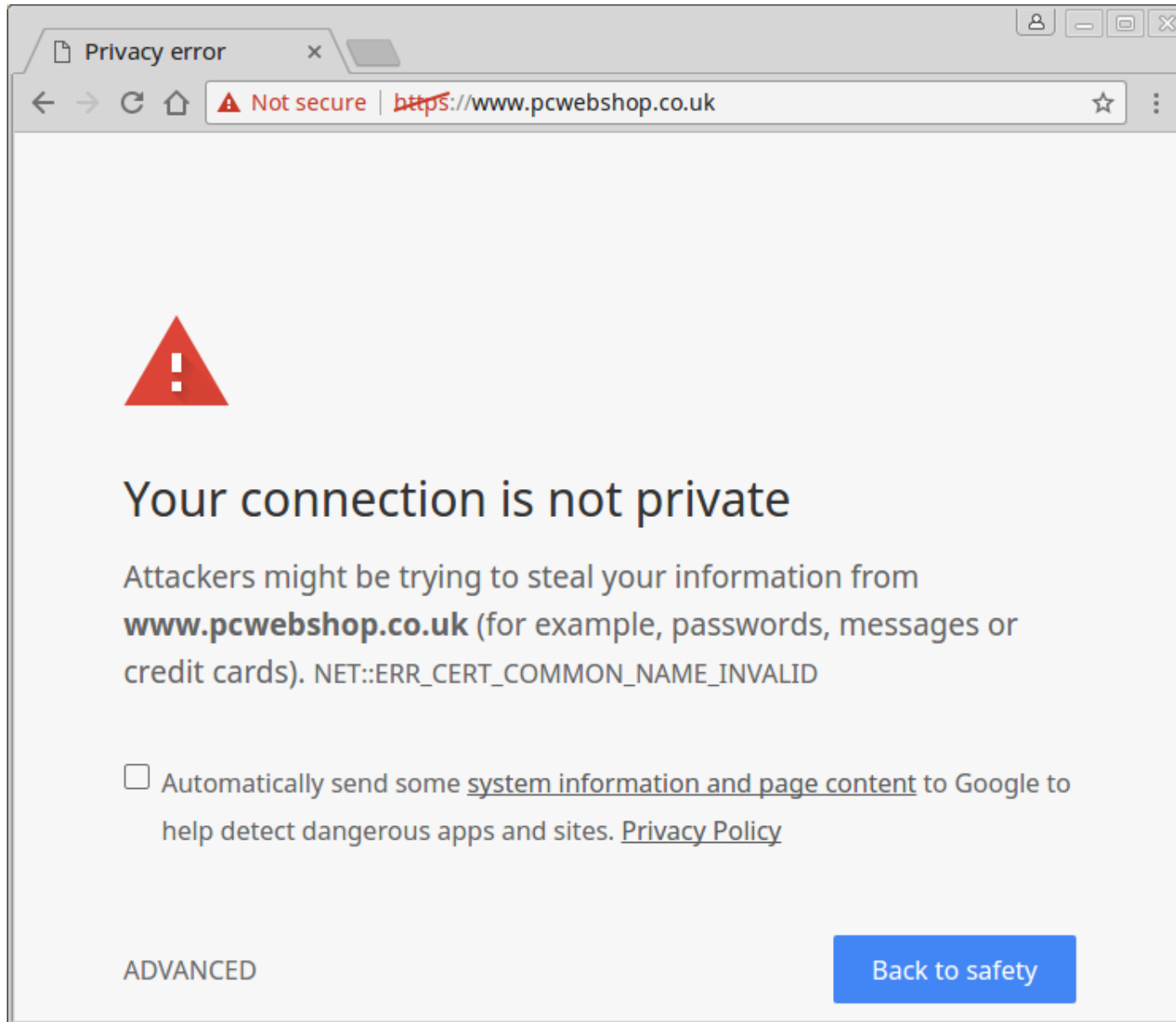


Insecure Connection



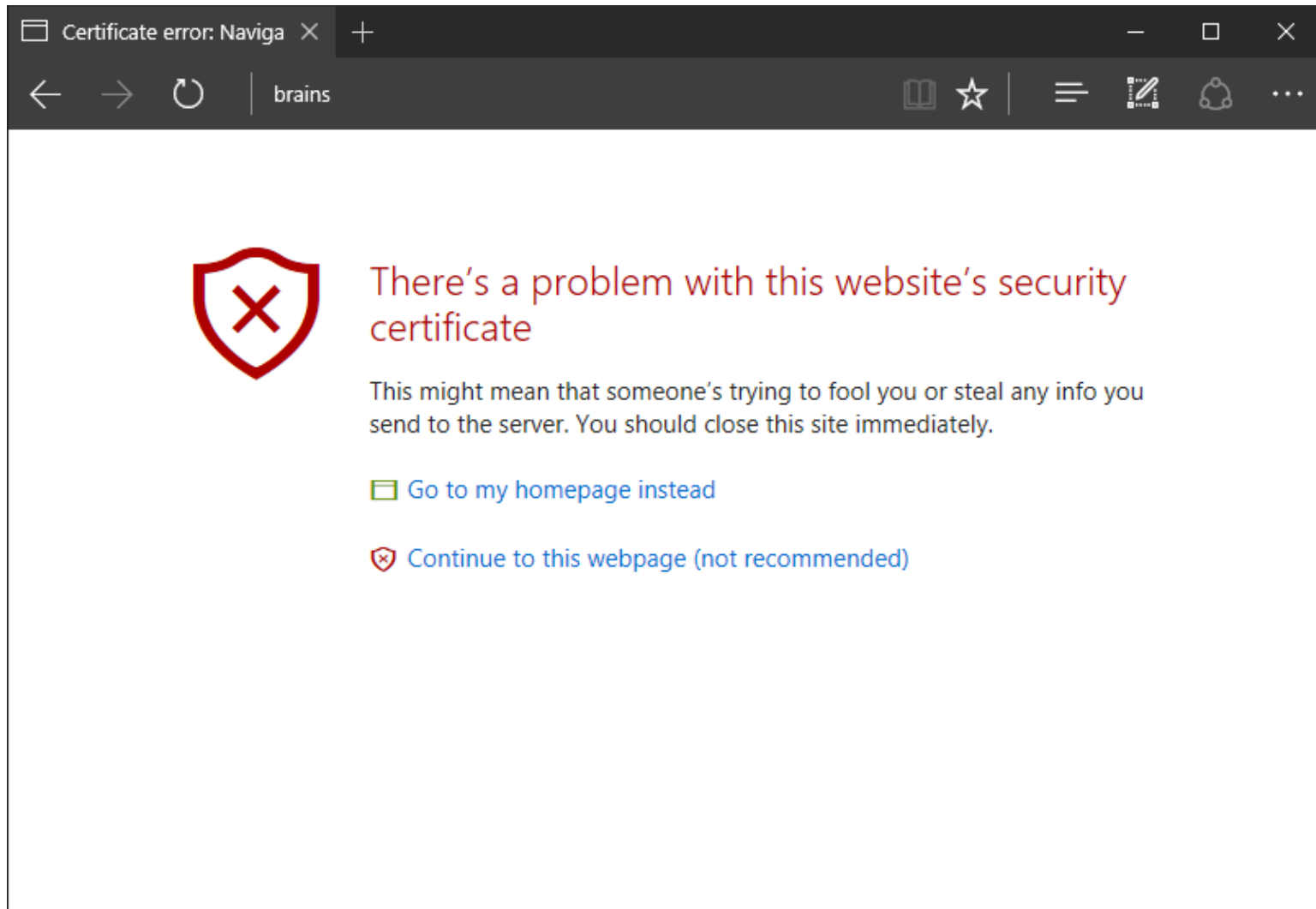
Firefox Browser

Insecure Connection



**Chrome
Browser**

Insecure Connection



Edge Browser

Finally ...

Any questions???